

551 NORWICH DRIVE

WEST HOLLYWOOD, CA 90048

Estimated Total Finished Square Footage: 3,250 SQ FT

Above-Grade: 3,250 SQ FT Below-Grade: N/A

Plus 470 SQ FT 2-Car Garage on Main Level

Plus 25 SQ FT Storage on Main Level

Plus 20 SQ FT Mech Room on Main Level

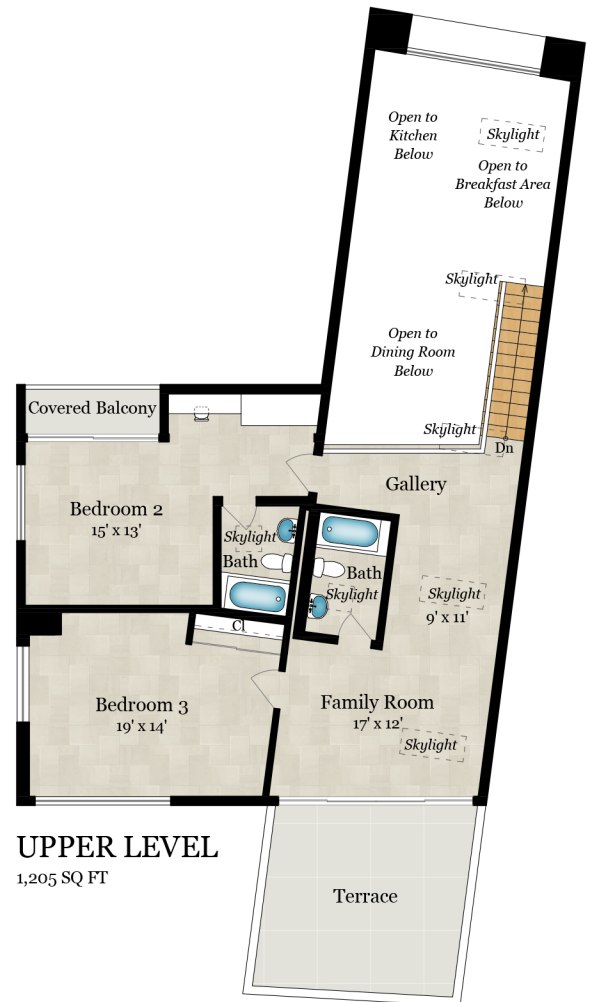
Calculated per ANSI Standard Z765-2003.

* Estimated Total Finished & Unfinished Square Footage: 3,765 SQ FT



MAIN LEVEL

2,045 SQ FT



UPPER LEVEL

1,205 SQ FT

Partial Lot Shown

Rendering by Floor Plan Visuals.

All measurements are approximate. While deemed reliable, no information on these floor plans should be relied upon without independent verification.



Presented by Brett Lawyer, Hilton & Hyland

Tel: 310.858.5402

Email: shawn@brettlawyer.com