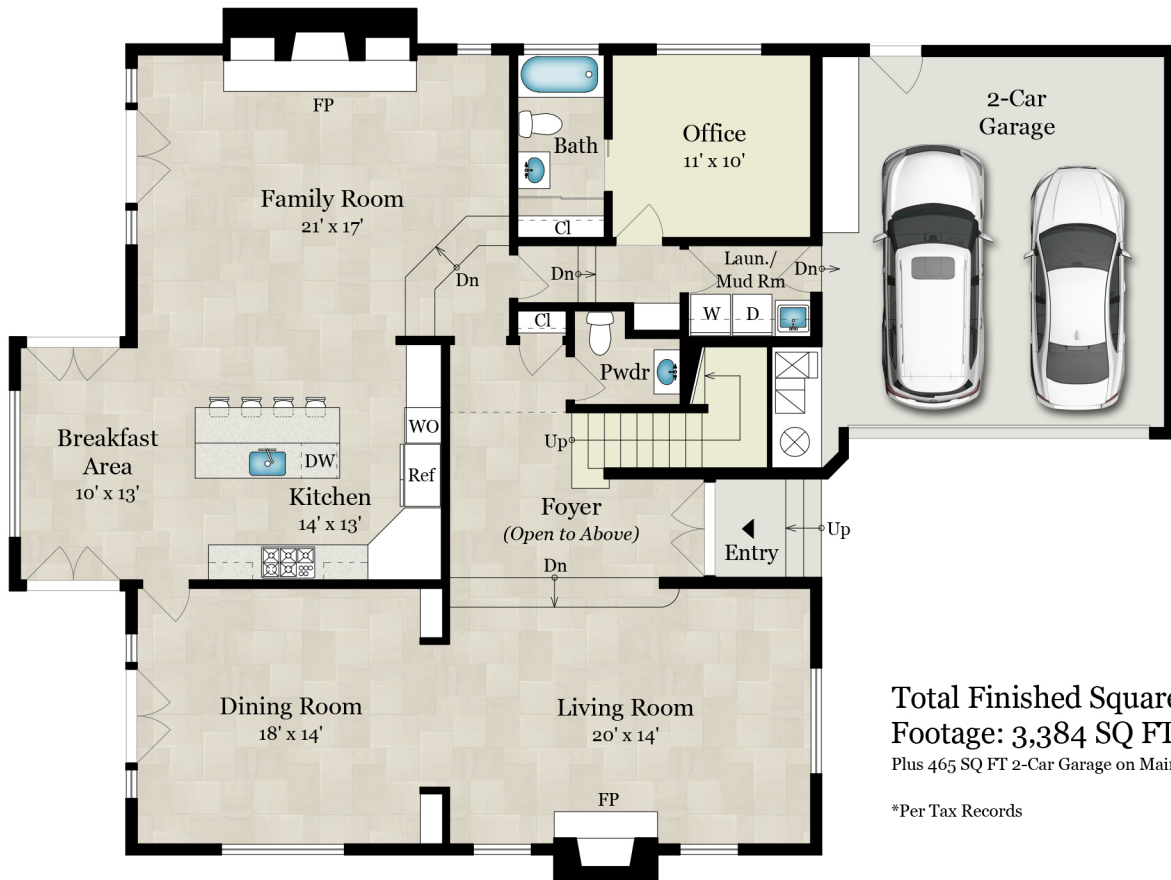


12534 PROMONTORY ROAD

LOS ANGELES, CA 90049



Total Finished Square
Footage: 3,384 SQ FT*

Plus 465 SQ FT 2-Car Garage on Main Level

*Per Tax Records

MAIN LEVEL



UPPER LEVEL



GLOBAL
LUXURY

Presented by:

TANIA FERRIS

Coldwell Banker

TaniaFerris68@aol.com

310-713-8234

Rendering by Floor Plan Visuals.

All measurements are approximate. While deemed reliable, no information on these floor plans should be relied upon without independent verification.