

2233 1/2 + 2237 AVENUE 33 GLASSELL PARK, CA 90065

UPGRADES & FEATURES

- **UPDATED ELECTRICAL**
- **FOUNDATION RETROFITTED**
- **NEW SEWER LINE**
- **NEW WASTE LINES**
- **100% COPPER PLUMBING**
- **NEW TANKLESS WATER HEATERS**
- **NEW EXTERIOR STUCCO AND PAINT**
- **RESTORED WINDOWS**
- **NEW DOWNSPOUTS**
- **ROOF IN GOOD CONDITION**
- **NEWLY LANDSCAPED WITH SPRINKLERS AND TIMERS**
- **NEW DRIVEWAY**
- **NEW DRIVEWAY GATE WITH REMOTE**
- **NEW PEDESTRIAN ENTRANCE GATE WITH KEYLESS ENTRY**
- **NEW DRYWALL**
- **NEW DOORS**
- **NEW FLOORS THROUGHOUT**
- **NEW LIGHT FIXTURES**
- **NEW HARDWARE**
- **NEW ENERGY EFFICIENT DUCTLESS MINI-SPLIT AIR CONDITIONING AND HEAT**
- **3 PRIVATE SINGLE CAR GARAGES AND 2 UNCOVERED PARKING SPACES INCLUDED**
- **2233 1/2 INCLUDES BALCONY AND PRIVATE YARD**
- **2237 INCLUDES BONUS OFFICE ROOM**
- **SHARED COMMUNITY YARD**

- **NEW KITCHENS:**
 - **NEW CUSTOM CABINETS**
 - **NEW COUNTERS**
 - **NEW CEMENT PAINTED TILE FLOORS**
 - **NEW APPLIANCES INCLUDING REFRIGERATOR, RANGE OVEN, AND DISHWASHER**

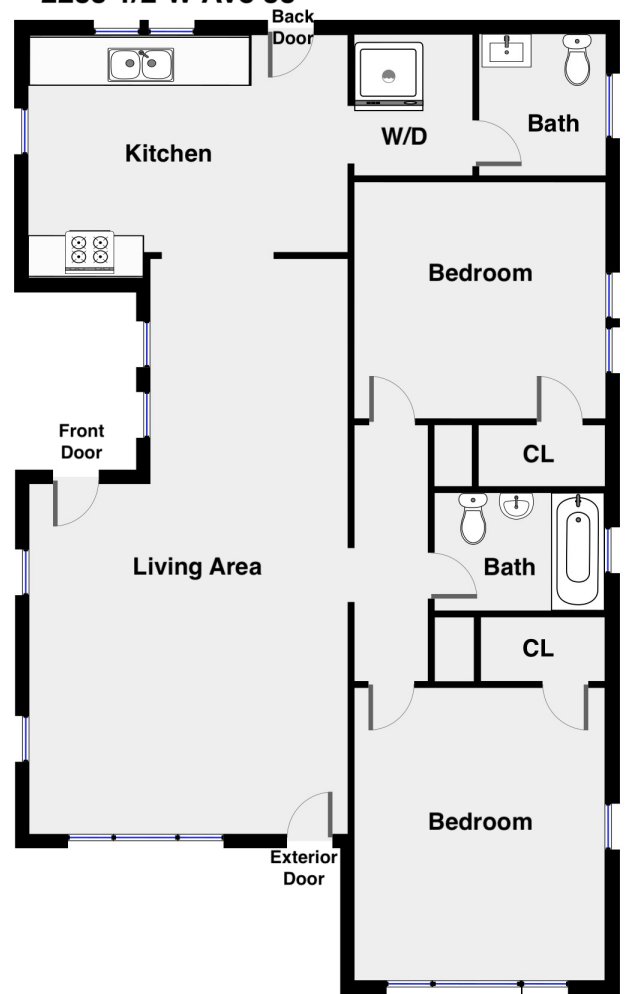
- **NEW BATHROOMS:**
 - **NEW TILED SHOWER ENCLOSURE**
 - **NEW SINK, TOILET, FAUCETS AND HARDWARE**
 - **LAUNDRY ROOM WITH NEW WASHER AND DRYER**

2233 1/2 + 2237 AVENUE 33 GLASSELL PARK, CA 90065

2237 W Ave 33



2233 1/2 W Ave 33



THIS FLOORPLAN IS PROVIDED WITHOUT WARRANTY OF ANY KIND. JOE SHOOTS 3D DISCLAIMS ANY WARRANTY INCLUDING, WITHOUT LIMITATION, SATISFACTORY QUALITY OR ACCURACY OF DIMENSIONS.

THIS FLOORPLAN IS PROVIDED WITHOUT WARRANTY OF ANY KIND. JOE SHOOTS 3D DISCLAIMS ANY WARRANTY INCLUDING, WITHOUT LIMITATION, SATISFACTORY QUALITY OR ACCURACY OF DIMENSIONS.