

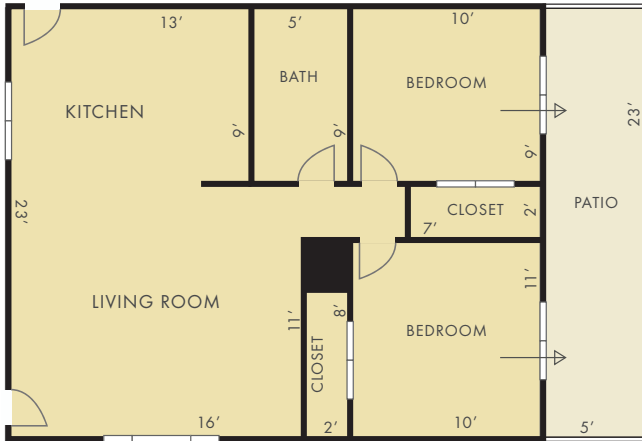
1017-1019 ^{1/2} N. BONNIE BRAE ST., LOS ANGELES, CA 90026

UPGRADES & FEATURES

- **BUILDING & UNITS RECENTLY RENOVATED**
- **NEW DUAL PANE WINDOWS IN 1017**
- **NEW 3/4" SOLID FLOORING WHITE OAK IN 1017 & 1019 ^{1/2}**
- **POLISHED CONCRETE IN 1017 ^{1/2}**
- **NEW KITCHEN COUNTERTOPS**
- **NEW CUSTOM KITCHEN SHELVES IN 1017**
- **NEW PLUMBING FIXTURES**
- **NEW LIGHT FIXTURES**
- **NEW FRONT AND REAR DOORS**
- **NEWER APPLIANCES**
- **NEW SLIDERS IN 1017 ^{1/2}**
- **UPDATED BATHROOMS**
- **NEW MINI SPLIT A/C & HEATING UNITS**
- **POCKET DOORS**
- **ORIGINAL 5 PANEL DOORS**
- **NEW MODERN DOOR KNOBS**
- **ORIGINAL BUILT-INS**
- **ORIGINAL TRIM**
- **FRESH EXTERIOR PAINT**
- **FRESH INTERIOR PAINT**
- **PRIVATE YARDS/PATIOS**
- **COMMUNAL GARDEN/PATIO**
- **NEW EXTERIOR FENCING**
- **NEW LANDSCAPING**
- **NEW TILE ENTRY/PORCH**
- **CENTRAL TO ECHO PARK/SILVER LAKE**

1017-1019 1/2 N. BONNIE BRAE ST., LOS ANGELES, CA 90026

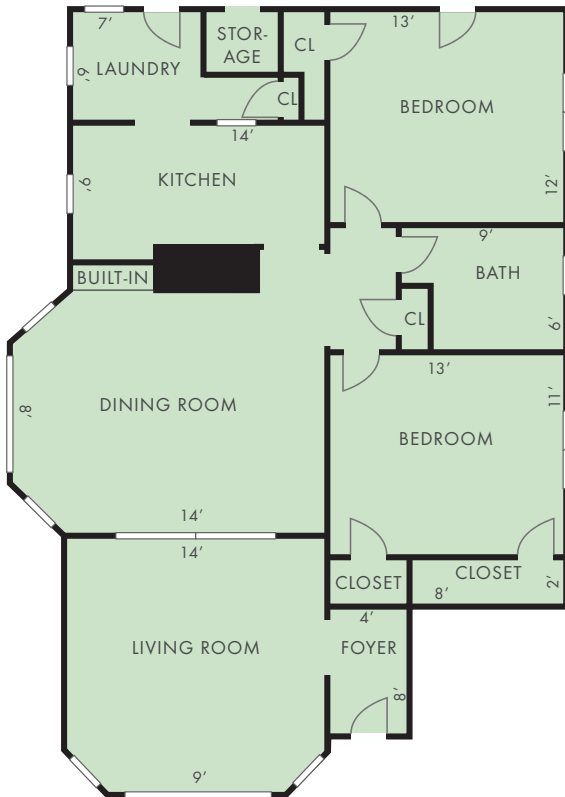
1017 1/2 LOWER UNIT 706 SQ FT



1019 1/2 UPPER UNIT 886 SQ FT



1017 LOWER UNIT 1150 SQ FT



1019 LOWER UNIT 1300 SQ FT

