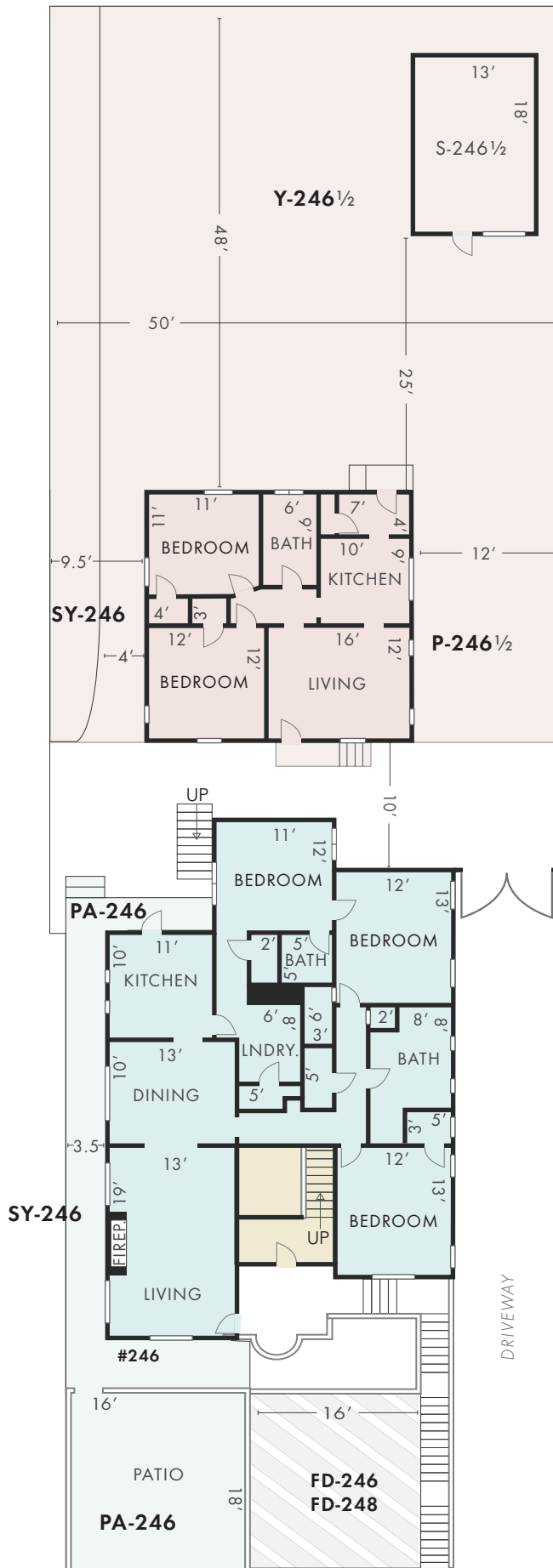


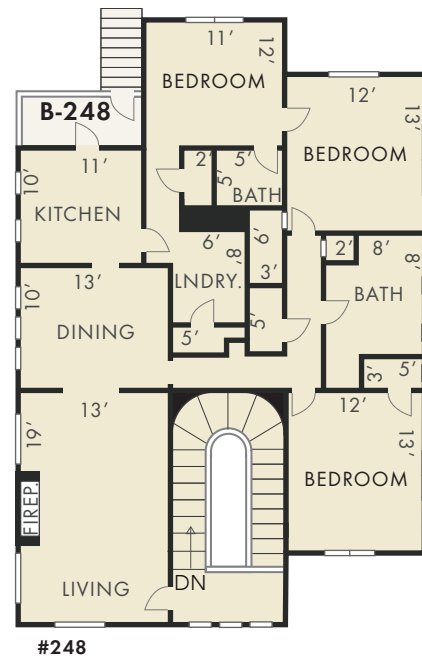
246 N. PARK VIEW ST LOS ANGELES, CA 90026

MAIN LEVEL



INSIDE	EXTERIOR	UNIT	LIVING AREA
		246	LIVING AREA: 1410 SQ FT
		248	LIVING AREA: 1540 SQ FT
		246 1/2	LIVING AREA: 728 SQ FT

UPPER LEVEL



LOWER LEVEL GARAGE

