

Alley



S Roxbury Dr

# 324 S ROXBURY DRIVE

BEVERLY HILLS, CA 90212

Estimated Total Finished  
Square Footage: 3,050 SQ FT

Above-Grade: 3,050 SQ FT Below-Grade: N/A

Plus 110 SQ FT Basement

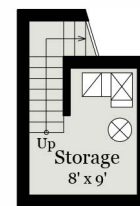
Calculated per ANSI Standard Z765-2003.

\* Estimated Total Finished & Unfinished Square Footage: 3,160 SQ FT



## UPPER LEVEL

1,390 SQ FT



## BASEMENT

110 SQ FT

## MAIN LEVEL

1,660 SQ FT



Rendering by Floor Plan Visuals.

All measurements are approximate. While deemed reliable, no information on these floor plans should be relied upon without independent verification.